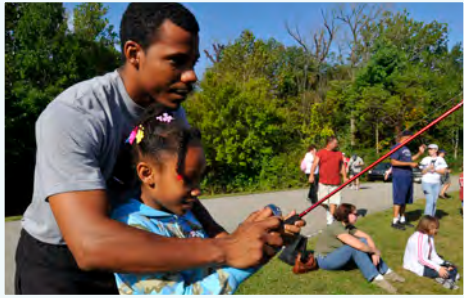


INDIANA

Statewide Comprehensive Outdoor Recreation Plan



2021-2025

I N D I A N A

Statewide Comprehensive Outdoor Recreation Plan

2021 - 2025

PREPARED BY

Indiana Department of Natural Resources
Division of Outdoor Recreation
402 West Washington St., W271
Indianapolis, Indiana 46204-2785

PHONE: (317) 232-4071
FAX: (317) 233-4648
WEB: dnr.IN.gov/outdoor

The preparation of this plan was financed in part through a planning grant from the National Park Service, Department of the Interior, under the provisions of the Land and Water Conservation Fund Act (LWCF) of 1965 (Public Law 88-578, as amended). The Indiana DNR Division of Outdoor Recreation will have the authority to represent and act for the State of Indiana in dealing with the Secretary of the Interior for the purposes of the LWCF Act of 1965.



STATE OF INDIANA
OFFICE OF THE GOVERNOR
State House, Second Floor
Indianapolis, Indiana 46204

Eric J. Holcomb
Governor

August 23, 2019

Dr. Bert Frost
Regional Director, Midwest Region
National Park Service
601 Riverfront Drive
Omaha, NE 68102

Dear Dr. Frost:

It has been five years since Indiana published our last Statewide Comprehensive Outdoor Recreation Plan (SCORP). We have continued to use the Benjamin Harrison Conservation Trust and the Land and Water Conservation Fund as primary funding sources to conserve and develop public outdoor recreation lands at the state, county and local level throughout Indiana. The SCORP is an invaluable guide for this development.

This letter certifies that the citizens of Indiana were provided with ample opportunity for public participation in our latest SCORP planning process. As with our previous SCORPs, the 2020 plan uses a needs assessment based primarily on public input solicited from the citizens of Indiana, park professionals, and a 15-member Plan Advisory Committee. Through third-party surveys we objectively gathered public input from citizens all over the state. At each stage, the Plan Advisory Committee offered reviews, feedback and ideas crucial to our plan's development using their extensive knowledge and hands-on experience in the subject matter. Like all things in Indiana, we combined this specialized input with data from national recreation trends and the review of local parks and recreation master plans to finalize the 2020 SCORP.

Our parks and outdoor recreation lands provide Hoosiers with the opportunity to experience nature and enjoy outdoor activities all across the state. The new 2020 Indiana SCORP details statewide acquisition priorities for these public outdoor recreation lands from willing sellers for the next five years.

Sincerely,

Eric J. Holcomb
Governor of Indiana

TABLE OF CONTENTS

FOREWORD

Indiana Department of Natural Resources Organization Chart	i
Indiana Department of Natural Resources Divisions	ii
Other Related Indiana Government Offices	iii
Acknowledgments	iv
Statewide Outdoor Recreation Plan	v
Land and Water Conservation Fund.	vi

INTRODUCTION 2

Research Study Finds that People Want Quality of Place, and Businesses Follow People	3
Research Shows that Experiences with Nature May Promote Formal Learning and Stewardship	3
Indiana’s Obesity Epidemic is Still Increasing.	3
Indiana’s Economy May Slow Down Soon	5
Indiana Tourism and Outdoor Recreation Contributing to Indiana’s Economy More than Ever	5
Outdoor Recreation Priorities for Public Parks and Recreation Providers and Stakeholders	9

1 THE SURVEYS 12

The Outdoor Recreation Participation Survey	13
The Local Park and Recreation Provider Study	15

2 THEMES & TRENDS 24

Survey Challenges	24
Mixed Method Surveying in this SCORP.	24
Examining the Surveys	25
Recurring Themes in the Surveys.	26
Needs Assessment	31

3 SUPPLY OF OUTDOOR RECREATION ACREAGE IN INDIANA. 34

National Recreation and Parks Association Guidelines for Public Park Acreage	34
Indiana’s LOS Guidelines for Parks, Recreation and Open Space	35
Local Outdoor Recreation Acres Listed by County and by Region: Municipal, Township, County, and Privately Owned but Open for Public Use.	36
State & Federal Outdoor Recreation Acres Listed by County and Region: State and Federal Public Outdoor Recreation Land	43
Total Outdoor Recreation Acres Listed by County and Region: All Public Outdoor Recreation Lands Currently Recorded in the DNR Facilities Inventory	48
Critical Counties	55

4	SUPPLY OF WETLANDS IN INDIANA	58
	Indiana Wetlands Legislation, Initiatives, and Resources	58
	Indiana Wetlands Acreage	62
5	ACCESSIBILITY AND OUTDOOR RECREATION	64
	Access to Programs and Services in Existing Facilities	64
	Who Benefits from Accessibility?	65
	Nothing New	67
	Standards and Guidelines	67
	Program Access	69
	Measure, Mark and Measure Again	71
	A Word About Products, Designers and Consultants	71
	Wrap-Up and Resources	72
6	INDIANA TRAILS PLAN	74
	New Trail-Related Legislation	75
	New Trails Documents and Resources	75
	Trail Funding	77
	The Visionary Trail System	79
	New Trail & Potential Trail Corridors	81
	Trail Trends	83
	Indiana’s Trail Supply	85
	Comparison to Neighboring States’ Trail Systems	88
	Demand for Trails In Indiana	89
	Indiana Trails Needs Assessment	91
	Progress Report for the 2016 State Trails Plan Goals and Strategies	93
	Goals and Strategies for the 2021–2025 Indiana Trails Plan	96
	Conclusion	100
7	SOME RESOURCES, IDEAS & INFORMATION	102
	‘Placemaking’ Data are Part of the 2017 Indiana Advisory Commission on Intergovernmental Relations Survey	102
	PRORAGIS is Now ‘Park Metrics’ (NRPA’s Free, Park And Recreation Database)	103
	Paying for Parks and Recreation During an Economic Recovery	103
	APPENDICES	110
	Appendix A • Outdoor Recreation Participation Survey	111
	Appendix B • 2018 Indiana Trails Stakeholder Survey	115
	Appendix C • Trail Activity/Trail User Participation Survey	118
	Appendix D • Local Recreation Providers Survey	123
	Appendix E • Water Trail Survey	134
	Bibliography	136

LIST OF TABLES

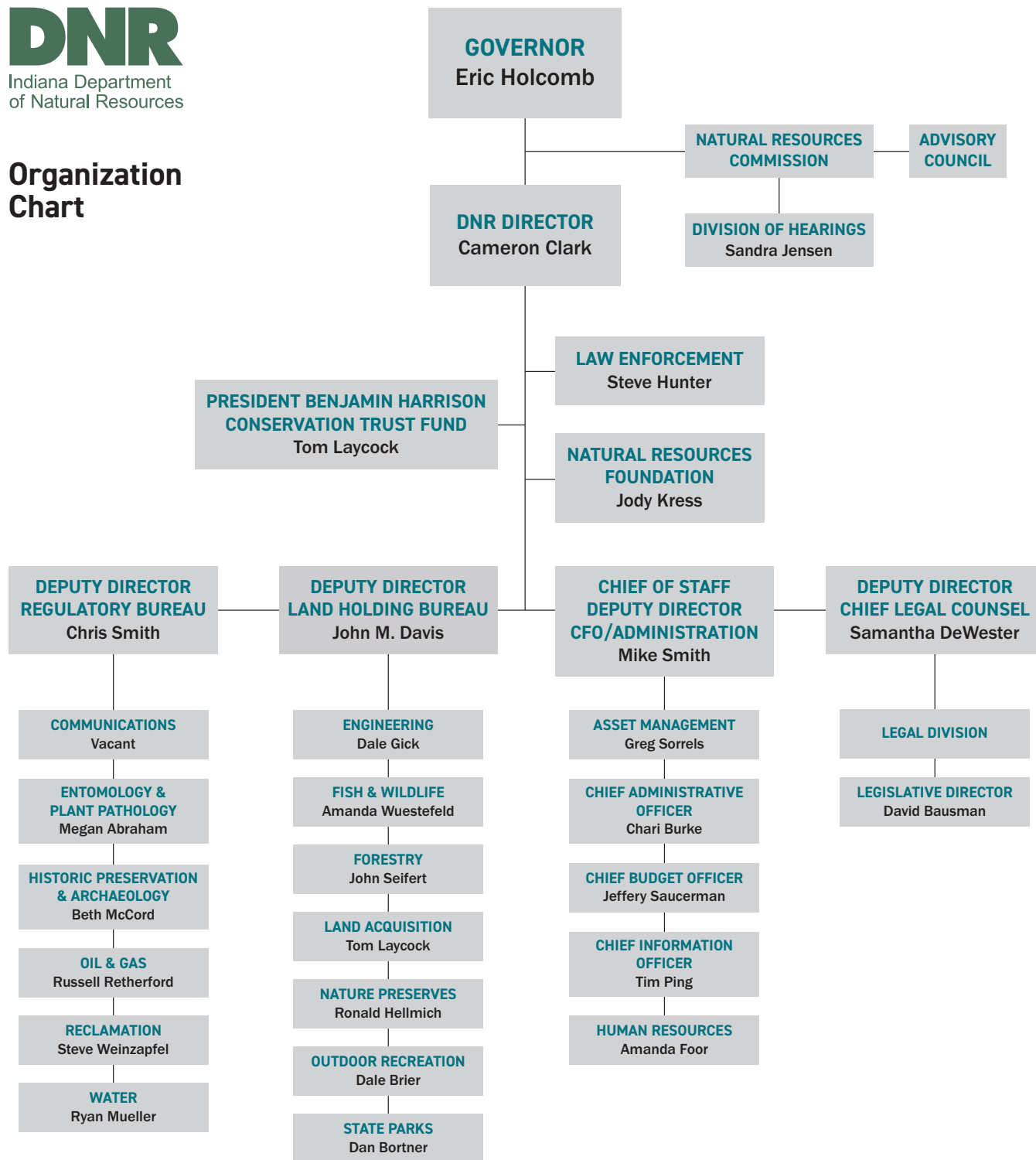
Table 1.1	User Served as Reported by Respondents	17
Table 1.2	2018 Budgets as Reported by Respondents	17
Table 1.3	Total Acres Managed	18
Table 1.4	Number of Properties in Respondent’s Park System.	18
Table 1.5	Forest Acres Used for Recreation	18
Table 1.6	Recreational Open Green Space	18
Table 1.7	Prairie Acres Used for Recreation	18
Table 1.8	Acres of Ponds and Lakes Used for Recreation	18
Table 1.9	Wetland Acres Used for Recreation.	18
Table 1.10	Paved Walking or Hiking Trails.	18
Table 1.11	Unpaved Walking or Hiking Trails	19
Table 1.12	Bicycle Trails	19
Table 1.13	Types of Trails Offered by Respondents	19
Table 1.14	Partner Collaboration.	19
Table 1.15	Funding Alternatives Tried and Used	20
Table 1.16	Respondents were asked how well the current supply of trails in Indiana met their needs.	21
Table 2.1	Survey Methods	25
Table 2.2	Common Survey Themes.	26
Table 2.3	Activity Trends	30
Table 3.1	Local Acres by County	37
Table 3.2	Local Acres by Region	40
Table 3.3	State & Federal Acres by County.	45
Table 3.4	State & Federal Acres by Region	47
Table 3.5	Total Acres by County	51
Table 3.6	Total Acres by Region	54
Table 3.7	Critical Counties Based on Total Acres	55
Table 4.1	Indiana Wetland Acres (Rolley, R.E., 1991)	62

LIST OF FIGURES

Figure 3.1	Local Acres Example.	36
Figure 3.2	Local Outdoor Recreation Acres, by County	39
Figure 3.3	Indiana Association of Regional Councils Planning Regions	41
Figure 3.4	State/Federal Acres Example.	43
Figure 3.5	State/Federal Outdoor Recreation Acres, by County	44
Figure 3.6	Total Recreation Acres by County.	49
Figure 3.7	Total Acres by Region	54
Figure 3.8	Critical Counties Based on Total Acres	56
Figure 4.1	NRCS Wetlands Reserve Easement Sites	60
Figure 6.1	2016 Indiana Visionary Trails System	80
Figure 6.2	New & Potential Trail Corridors	82
Figure 6.3	2019 Indiana Trail Inventory	86
Figure 6.4	2019 Indiana Trail Types	87
Figure 6.5	2019 Population Within a 5 Mile Radius of a Trail	94
Figure 6.6	2019 Visionary Trails System Progress.	97



Organization Chart



INDIANA DEPARTMENT OF NATURAL RESOURCES DIVISIONS

- **Accounting & Internal Audit** provides internal DNR fiscal tracking and support to all other divisions.
- **Budget & Administrative Support** manages the administrative support staff for all of DNR, as well as providing budgetary control.
- **Engineering** provides engineering and technical support for all DNR properties and others, including architectural, sanitary, electrical, landscape, civil, and code enforcement.
- **Entomology & Plant Pathology** provides information and technical assistance in managing plant and insect pests, specializes in invasive and harmful species.
- **Facilities, Fleet & Asset Management** administers the department's facilities, including mailroom services, access control, safety and ADA compliance programs; fleet, including vehicle reservations, owned fleet inventory and maintenance, accident review board and Wright Express; and asset management, tracks all assets with a cost of more than \$500 and a useful life of one year or more.
- **Fish & Wildlife** manages and monitors fish and wildlife populations, hunting and fishing licenses, and provides related technical assistance and information.
- **Forestry** manages State Forests and provides information and technical assistance to foresters and private landowners.
- **Land Acquisition** supports the acquisition of new properties from willing sellers via partnerships, donations, bequests and sales of the President Benjamin Harrison Conservation Trust Fund environmental license plate.
- **Historic Preservation & Archaeology** acts as staff for State Historic Preservation Officer and promotes conservation of cultural resources by facilitating Indiana and federal preservation programs.
- **Human Resources** serves as resource for current and future employees of DNR, provides information on employment, benefits, volunteering, internships, applications and more.
- **Information Services** provides technological service and support, DNR-wide.
- **Law Enforcement** provides 214 Indiana Conservation Officers in 10 law enforcement districts, handles environmental investigations, emergency response, education, law enforcement and property protection.
- **Natural Resources Foundation** supports the charitable, educational and scientific programs, projects and policies of the DNR.
- **Nature Preserves** provides permanent protection to significant natural areas, maintaining sustainable examples of all native ecological communities in Indiana.
- **Oil & Gas** oversees petroleum production and exploration through three program areas: permitting and compliance, field services, and abandoned sites.
- **Outdoor Recreation** handles state- and local-level park & recreation master planning and parks, streams, and trails grants; manages two properties and multiple programs; and provides technical assistance for the public and for recreation professionals.
- **Communications** provides internal and external communications, public relations, marketing, and public education for DNR.
- **Reclamation** protects resources by overseeing reclamation of abandoned mines, active mines, mine blasting, mining permits, and public participation in oversight and permit processes.
- **State Parks** manages and operates Indiana State Parks, state-managed lakes recreation, and State Park Inns, and provides education, recreation, resource conservation and management of these public lands.
- **Water** oversees above- and below-ground water, provides customer information services, permitting, technical services, and engineering services; operates three work groups: floodplain management, resource assessment, and the compliance & projects branch.

OTHER RELATED INDIANA GOVERNMENT OFFICES

- **Indiana Department of Agriculture, Division of Soil Conservation** provides guidance, education and technical assistance to public and private landowners throughout Indiana.
- **Indiana Department of Environmental Management** deals with Indiana's environmental quality and the sustainability of its air, water and land. Technical oversight, permits and regulatory compliance are part of its mission.
- **Indiana State Department of Health** provides policy, guidance and facilitation of public health and health-care activities and programs statewide. ISDH is responsible for creating the Indiana Comprehensive Nutrition and Physical Activity Plan 2010-2020.
- **Indiana Department of Transportation** works with all aspects of the statewide transportation system, including bus, car, rail, air, bicycle and foot.
- **Indiana Natural Resources Commission** comprises 12 bipartisan resident members who meet four times per year to address DNR issues.
- **Indiana Office of Community and Rural Affairs** provides planning, grants and technical assistance for rural economic development statewide.
- **Indiana Economic Development Corporation** is a public-private partnership with a 12-member board that acts as the top economic development agency for Indiana.
- **Indiana Office of Tourism Development** is a stand-alone agency within state government that uses public and private funds to expand tourism statewide.
- **State Museum & Historic Sites** operates a wide variety of historic/cultural programs and facilities, including the Indiana State Museum in Indianapolis, Gene Stratton-Porter Cabin, Historic New Harmony, and the Angel Mounds archaeological site.

ACKNOWLEDGMENTS

Editor

Marty Benson DNR Division of Communications

Pre-Publication Design and Layout

Adam Cox DNR Division of Communications

2021 Trails Plan Update

Amy Marisavljevic DNR Division of Outdoor Recreation

Nathaniel Simmons DNR Division of Outdoor Recreation

Allen Hurst DNR Division of Outdoor Recreation

Evan Kalember DNR Division of Outdoor Recreation

SCORP Surveys

Dr. Amy Gregg (Provider Survey) Ball State University

John Schmidt (Trail User Survey and Participation Survey) Survey America

SCORP Accessibility Chapter

Ric Edwards DNR Div. of Facilities, Fleet, and Asset Management

SCORP Project Leader & Lead Author

Greg Beilfuss DNR Div. of Outdoor Recreation

Many thanks as well to the following organizations for sharing information and permission to use some of their tables, text, or materials:

National Recreation and Parks Association

Accelerate Indiana Municipalities

Indiana Association of Regional Councils

US Dept. of Agriculture, Natural Resources Conservation Service

STATEWIDE OUTDOOR RECREATION PLAN

SCORP Vision Statement

The SCORP is an information resource that quantifies and analyzes the state's outdoor recreation resources for the social, environmental, health, and economic benefit of citizens statewide. The SCORP is intended to support local, regional and state-level recreation decision making, as well as foster research, partnerships and cooperation among users, planners, government officials, nonprofits, and the private sector.

SCORP Goals

- Provide a quantitative and qualitative analysis of outdoor recreation supply and demand statewide.
- Improve the provision of outdoor recreation to all users.
- Qualify Indiana for National Park Service Land and Water Conservation Fund (LWCF) state-side grants.
- Set statewide priorities for funding of grants through LWCF, the Recreational Trails Program (RTP), and any other applicable funds available at State or federal levels.

SCORP Planning

The production of the Indiana Statewide Comprehensive Outdoor Recreation Plan (SCORP) requires the expertise of people from many disciplines to assemble an effective tool for Indiana. Those who volunteer as members of the Plan Advisory Committee share input several times a year during the research and writing. They provide valuable insight and commentary that guides the development of surveys, research analysis, and creation of a plan that can be used by providers from all levels of community, including state, county, municipal and township.

The DNR Division of Outdoor Recreation thanks the committee members for their advice, support, expertise, time and talent. Committee members give direction to the SCORP 2016-2020 and ensure the priorities and contents are consistent with the State's vision, mission and goals for outdoor recreation and the DNR.

Plan Advisory Committee

Susan Craig	Southeastern Indiana Regional Planning Commission
Jerry Byanski	Park Planner, EarthPlan Associates
Jenny Orsburn	Portage Parks and Recreation Department
Ric Edwards	DNR, ADA Safety Director
Walter Lenckos	Porter County Parks and Recreation Department
Pete Fritz	Healthy Communities Planner, Indiana State Department of Health
Amy Gregg	Natural Resources and Environmental Management, Ball State University
Brian Kaluzny	Clarksville Park & Recreation Department
Nancy Kinder	Eastern Indiana Development District
Yvette Rollins	Equestrian/Trails Representative
Nathan Schaumleffel	Indiana State University, Recreation & Non-Profit Leadership Program
Steve Slauson	St. Joseph County Parks
Donald Sporleder	FAIA, Notre Dame, Professor of Architecture
Daniel Valleskey	Paddler/Water Trails Representative
Bob Arnold	Park Planner, EarthPlan Associates

LAND AND WATER CONSERVATION FUND

The Land and Water Conservation Fund (LWCF) Act of 1965 (Public Law 88-578, 78 Stat 897) was enacted “... to assist in preserving, developing, and assuring accessibility to all citizens of the United States of America of present and future generations and visitors who are lawfully present within the boundaries of the United States of America such quantity and quality of outdoor recreation resources as may be available and are necessary and desirable for individual active participation in such recreation and strengthen the health and vitality of the citizens of the United States by (1) providing funds for and authorizing federal assistance to the states in planning, acquisition, and development of needed land and water areas and facilities and (2) providing funds for the federal acquisition and development of certain lands and other areas.”

According to the National Park Service 2008 LWCF State Assistance Program Manual: “To be eligible for LWCF assistance for acquisition and development grants, each state shall prepare a Statewide Comprehensive Outdoor Recreation Plan (SCORP), and update it at least once every five years.” In other words, a SCORP needs to look at outdoor recreation supply and demand; set priorities for current and future capital improvement, land acquisition, and development; and allow opportunities for citizens and local government officials to take part in the planning process.

The main objectives of the LCWF have remained the same for 54 years: land acquisition, preservation, provision, development, accessibility, and the strengthening of the health and vitality of our nation. This SCORP shows that Indiana’s focus is still directly in line with the LWCF Act of 1965.

Indiana has received more than \$90 million from the LWCF since the program’s start. Indiana’s smaller entities (e.g., counties, townships, municipalities) provide outdoor recreation opportunities to its citizens through the appropriation of LWCF grants. Since 1965, more than 170 Indiana park and recreation boards have obtained grants. The majority of projects funded each year include land acquisition, some include trail development, and a few include the development of new aquatic features. Amenities that potentially are included in these projects include, but are not limited to:

- Spray Pads
- Picnic Areas
- Natural Areas
- Playgrounds
- Ball Fields
- Dog Parks

LWCF requires a 50/50 match from communities that receive the grant. All funds for the project must be paid by communities and then reimbursed upon successful project completion. As operating and maintenance costs increase, so does the importance of the LWCF in funding continued acquisition of land where needed. Unfortunately, these grants cannot fund every project in the state. Alternative funding methods will be discussed in this SCORP.