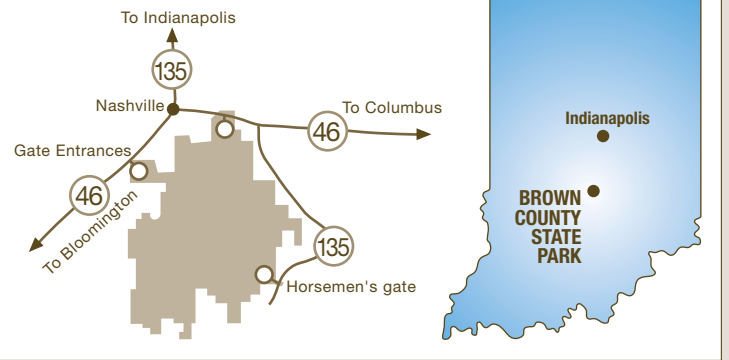


BROWN COUNTY STATE PARK

1405 State Road 46 West • Nashville, Indiana 47448 • (812) 988-6406
15,815 Acres Established 1929

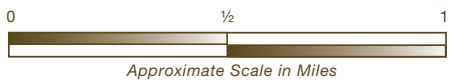
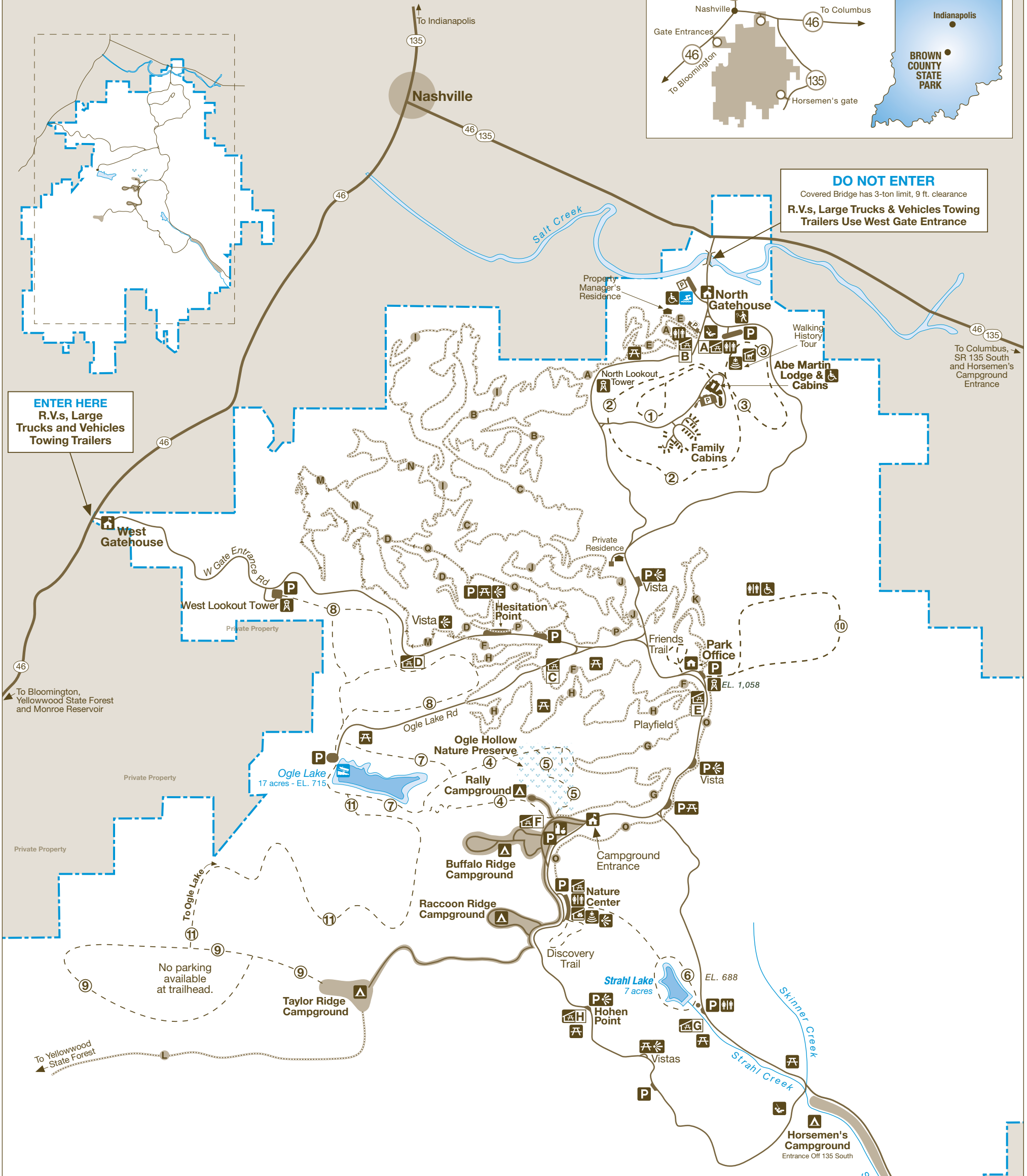
LOCATION MAP



DO NOT ENTER

Covered Bridge has 3-ton limit, 9 ft. clearance
R.V.s, Large Trucks & Vehicles Towing Trailers Use West Gate Entrance

ENTER HERE
R.V.s, Large Trucks and Vehicles Towing Trailers



LEGEND	
	Boundary
	Road
	Hiking Trail
	Bike Trail
	Nature Preserve
	Parking
	Swimming Pool
	Restrooms
	Fire/Lookout Tower
	Horse Stable
	Scenic Viewpoint
	Accessible
	Campground
	Nature Center
	Camp Store
	Playground
	Picnic Shelter
	Amphitheater
	Tennis Courts
	Gatehouse
	Picnic Area

MOUNTAIN BIKE TRAIL TABLE

TRAIL	MILEAGE	RATING
A North Gate Trail	1.2	Beginner
B North Tower Loop	3.5	Beginner
C Aynes Loop	3.4	Intermediate
D Hesitation Point Trail	2.1	Advanced
E Pine Loop	1.2	Beginner
F Walnut Trail	2.1	Advanced
G Limekiln Trail	2.4	Beginner
H Schooner Trace	4.1	Expert
I Green Valley Trail	5	Intermediate
J Bobcat Loop	2	Expert
K Weedpatch	2.4	Intermediate
L Ten O'Clock Line	2	Advanced
M Hobbs Hollow	3.4	Expert
N Shelley	2	Intermediate
O Limekiln East	1.6	Beginner
P West Gate	1.1	Beginner
Q Gnawbone	1.1	Advanced

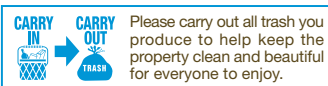
HIKING TRAIL TABLE

TRAIL	MILEAGE	TRAIL TYPE
1	.9	Moderate
2	2	Moderate
3	1.25	Moderate
4	1.25	Moderate
5	.75	Rugged
6	1.5	Easy/Rugged
7	1.5	Moderate
8	3.5	Moderate
9	3.0	Rugged
10	2.2	Rugged
11	2.75	Rugged
Friends	short	Easy
Discovery	.5	Moderate

SHELTERS

A	Lower
B	Upper
C	Walnut
D	Tulip Tree
E	Hoosiers Nest
F	Recreation Building
G	Strahl Lake
H	CCC Camp

Horsemen's campers only
No through traffic



attractive self-guiding nature trail, which describes natural aspects of the property.

Several picnic areas, some of which have shelters equipped with fireplaces, are offered. Several have comfort stations located nearby.

The Nature Center includes a snake exhibit, bird watching room and other displays. Naturalist services are available year-round, with reduced winter hours.

The wildlife includes a variety of species adapted to life in the forest and its edges. White-tailed deer, raccoons, gray squirrels, and various birds, including robins, white-breasted nuthatches, blue jays, cardinals, juncos, crows and wild turkeys, abound.

Campsites are available year-round. The campgrounds have electrical hookups, modern comfort stations and showers. The park also has a horsemen's campground. Those who prefer the comforts of home may prefer the Abe Martin Lodge, which has 84 lodge rooms (each with two beds and bathroom), meeting and conference rooms, a dining room, and an indoor water park. In addition, sleeping cabins, with a total of 56 bedrooms, are offered for rent, as are 20 completely furnished, year-round family cabins and 12 cabin suites.

Other park amenities include a swimming pool, shelter houses, playground equipment, two fishing lakes, guided horse riding, and a country store selling picnic supplies and souvenirs.

Brown County State Park makes for an enjoyable outdoor experience for those with a wide range of tastes and preferences.

THIS IS YOUR PARK

Visitors shall follow our rules, which are designed to fulfill the purpose for which state parks were established, namely, to preserve a primitive landscape in its natural condition for the public's use and enjoyment.

DNR PROPERTIES NEARBY

- **T. C. Steele State Historic Site**—Experience the rolling hills, scenic vistas, majestic trees and landscape that inspired noted Hoosier painter T.C. Steele and his wife Selma to build their home and cultivate beauty and art in Brown County.
- **Atterbury Fish and Wildlife Area**—archery range, boating, boat ramps, dog training areas, fishing, fishing pier, hunting, target ranges, trapping, wildlife watching
- **Yellowwood State Forest**—boating, boat ramps, boat rental, bridle trails, camping, fishing, hiking trails, hunting, picnicking, shelter house, group camp, trapping

Pick up an Indiana Recreation Guide for more information.

For a list of park events, visit interpretiveservices.IN.gov

ACTIVITIES AND FACILITIES

AUTO TOUR—Audio-guided tour along the park's south loop roadway, an area rich in cultural and natural history. Visit on.IN.gov/BrownCountySP then click 'Photos, Video & Audio' for audio and a map.

CAMPING—Campground equipped with flush toilets, hot water and showers. Occupancy limited to 14 consecutive nights. A separate Horsemen's and Rally campground available. Camping reservations made through the Central Reservation System.

CAMP STORE—Sells camping and picnic supplies, firewood and souvenirs. Open April through October. Wood available during summer months.

FAMILY CABINS—Two bedrooms (sleeps eight), living rooms, complete kitchen, bathroom, linens, dishware and cooking utensils provided. Easy walking distance to the lodge. Reserve through the Inns Reservation System.

FISHING—Bass, bluegill, etc. Canoes, kayaks, rowboats permitted. Non-motorized or electric trolling motors only. State fishing license and/or DNR Lake permits required. Both available for purchase at park office. Ogle Lake-17 acres; Strahl Lake-7 acres.

HIKING—More than 21 miles of easy-to-rugged trails for you to enjoy.

HORSE TRAILS—Facilities for those who bring their own horses.

INN—Lodge and cabins, restaurant, banquet and meeting facilities and indoor aquatics center. Open year-round. Reserve through the Inns Reservation System.

INTERPRETIVE NATURALIST SERVICE—Inquire at Nature Center, park office or lodge. Program schedules are available at interpretiveservices.IN.gov or 812-988-5240.

MOUNTAIN BIKE TRAILS—For bikers and hikers. 37 miles, easy to extremely difficult, 400 ft. of change in elevation. Trails wind around hills, ravines and across streams. Main trailhead at pool parking lot. Access points near the North Lookout Tower, Hesitation Point, Hoosiers Nest Shelter and Rally Campground. Built and maintained by Hoosier Mountain Bike Association volunteers. For trail conditions and info, visit HMBA.org.

PICNIC AREAS—Tables, grills, toilet facilities, playground equipment and playgrounds.

SHELTERS—Reserve through the Central Reservation System.

SADDLE BARN—Seasonal. Bridle trails, pony rides, hayrides. Inquire at the saddle barn or call (812) 988-8166.

SWIMMING—Olympic-size pool, open Saturday before Memorial Day and closes Labor Day. Pool may close toward end of summer if no lifeguards available. Swimming prohibited in Ogle and Strahl lakes.

RULES AND REGULATIONS

- Do not injure or damage any structure, rock, tree, flower, bird or wild animal. Do not gather limbs, brush or trees (either dead or alive) for firewood because they rebuild the natural humus.
- Any firearm (except lawfully possessed handguns), BB gun, air gun, CO₂ gun, bow and arrow, paint gun or spear gun in possession in a state park must be unloaded or un-nocked and stored in a case or locked within a vehicle, except when owner is participating in an activity authorized by written permit.
- Dogs and cats must be kept on a leash no longer than 6 feet and be attended at all times.
- Vending or advertising without permission of the Department of Natural Resources is prohibited.
- Camping is permitted only in the campground. Youth groups must be supervised by adults.
- Fires shall be built only in designated places.
- The Carry In/Carry Out trash policy applies to all day-use areas. Overnight guests must put waste in receptacles provided for that purpose.
- Motorists shall observe posted speed limits and park only in designated areas. 30 mph is maximum speed.
- Swimming is permitted only in the pools.
- Drinking water should be taken only from pumps, hydrants or fountains provided for that purpose. This water is tested regularly for purity.
- Report lost or found articles to the park office.
- Pull off roads while observing wildlife. Feeding wildlife is prohibited.
- Use of metal detectors is prohibited.

For a complete list of rules and regulations, inquire at park office.

DESCRIPTION OF HIKING TRAILS

TRAIL & DESCRIPTION	DISTANCE	DIFFICULTY
1. Lodge Trail	.9 miles	Moderate
Joins with Trail 2 for a short distance to return near lodge. Walk through land wooded with oak, hickory, sassafras, beech and maple		
2. CCC Trail	2 mile	Moderate
CCC-built trail with impressive stone bridges, stairways and retaining walls. Starts and ends behind the lodge. Passes near Lower Shelter and North Lookout Tower.		
3. Saddle Barn Loop	1.25 miles	Moderate
Traverses a variety of topography. Passes saddle barn and amphitheatre and returns to lodge. Varieties of ferns can be seen in the ravines and on the slopes.		

CENTRAL RESERVATION SYSTEM



Reservations for all types of camping, family cabins, and shelters at state parks, reservoirs and forests can be made online or by calling toll-free.

Online: camp.IN.gov
Call: 1-866-6campIN
(1-866-622-6746)

ABE MARTIN LODGE



OPEN ALL YEAR

Lodge rooms and cabins available. Restaurant open to the public. Information toll-free: 1-877-265-6343
Reservations: 1-877-lodges1
(1-877-563-4371)

Online: IndianalInns.com

FOR MORE INFORMATION



Write: Brown County State Park
P.O. Box 608
1405 State Road 46 West
Nashville, IN 47448

Call: 812-988-6406
Online: on.IN.gov/browncountysp
Saddle Barn: stateparks.IN.gov/3055.htm

SPECIAL NOTE

Receipts from admission and service charges are used to help defray the operation and maintenance costs of the park. List of fees available in the park office.



Please carry out all trash you produce in order to keep your park clean and beautiful for others to enjoy!

See everything Indiana State Parks has to offer at stateparks.IN.gov.

Subscribe to Outdoor Indiana magazine today, Visit OutdoorIndiana.org or call 317-233-3046.

The programs, services, facilities, and activities of the Indiana Department of Natural Resources are available to everyone. DNR prohibits discrimination on the basis of race, color, national origin, age, sex, or disability. If you believe that you have been discriminated against in any program, activity, or facility as described above, or if you desire further information please write to: Department of Natural Resources, Executive Office, 402 W. Washington Street, W256, Indianapolis, IN 46204, (317) 232-4020.

DESCRIPTION OF HIKING TRAILS

TRAIL & DESCRIPTION	DISTANCE	DIFFICULTY
4. Rally Campground	1.25 miles	Moderate
Starts near the front of the Rally Campground and leads through upland terrain to a deep ravine at the headwaters of Ogle Lake. Joins Trail 7 for a short distance. Meets with Trail 5 at Ogle Hollow Nature Preserve.		
5. Ogle Hollow Nature Preserve	.75 miles	Rugged
Self-guided trail starts near the parking lot for Rally Campground and follows a slope wooded with yellowwood trees, loops through the nature preserve and intersects with Trail 4 from Ogle Lake.		
6. Strahl Lake	1.5 miles	Easy/Rugged
Easy walk around Strahl Lake but challenging .7 mile spur to the Nature Center.		
7. Ogle Lake	1.5 miles	Moderate
A hilly, wooded hike along the shores of Ogle Lake		
8. HHC Trail	3.5 mile	Moderate
Extends east from west lookout, continues to near Hesitation Point, and then southwest to parking area at Ogle Lake and Trail 7. This trail was improved by volunteers from the Hoosier Hikers Council 2002-2007.		
9. Taylor Ridge	2.75 miles	Rugged
Starts near site 324 in campground. No parking at trailhead. Travels ridge top beyond campground, dropping into adjacent valley to follow stream before looping back to ridge top.		
10. Fire Tower	2.2 miles	Rugged
Follows ridge behind fire tower before looping northward crossing deep ravines and hilltops. Passes CCC shelter.		
11. Vollmer Trail	2.75 miles	Rugged
Trail 11 is a linear rugged trail that connects Trail 9 to Trail 7. It is an out-and-back trail—you must return the way you came (5.5 miles out-and-back). This trail has many elevation changes.		
Friends	short	Easy
Paved trail, with benches and vista on flat terrain. Constructed by the Friends of Brown County State Park.		
Discovery	.5 miles	Moderate
Self-guided nature trail. Brochure available at the trailhead at the south end of the Nature Center parking lot.		

PLEASE STAY ON MARKED TRAILS.

Please let wild animals remain wild.

Feeding wildlife is prohibited. Feeding of wild animals can result in harm to both animals and people. Animals who depend on handouts become a nuisance to visitors and a danger to themselves. Please lock up all food and coolers inside cars or campers. Roll up car windows tightly.

DNR Indiana Department of Natural Resources

INDIANA



on.IN.gov/stateparks

Brown County State Park is the largest Indiana State park. This nationally known, 15,815-acre facility opened in 1929.

In the first few years, as the park grew in popularity, several facilities were developed, including Abe Martin Lodge, several cabins and Ogle Lake. The roads, entrances, and many trails were added or improved.

On June 1, 1934, the Veterans Civilian Conservation Corps Company 1557 began its work in the park. Its planting of black locust, black walnut, various pines and spruces gave nature a helping hand in healing extreme erosion on previously cleared slopes. The CCC workers also built many of the existing buildings, shelters, ovens, roads, vistas, trails, and the west lookout tower.

The many miles of marked trails are ideal for those who prefer seeing the park on foot, on horseback, or by bicycle. About 70 miles of bridle trails, 21 miles of hiking trails, and 37 miles of mountain biking/hiking trails lead through the steep, forested hills. The park's Ogle Hollow Nature Preserve contains an