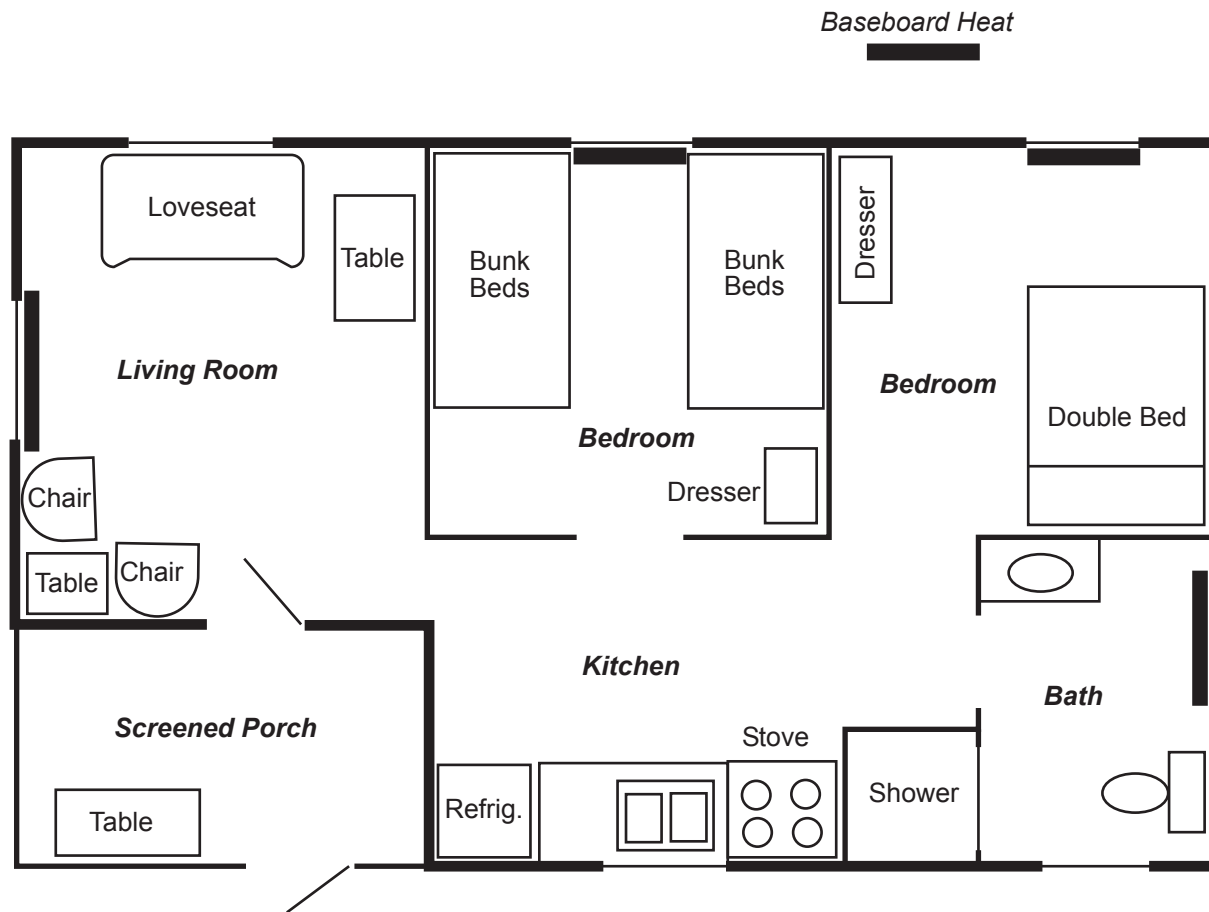


SHAKAMAK STATE PARK

Cabins B and C



NEED ASSISTANCE DURING YOUR STAY?

Please contact the park office, gatehouse or other DNR personnel.

Park Office: 812-665-2158

Dial 911 for all emergencies.

PARK OFFICE HOURS:

Mon.-Fri. 8:30 a.m.-4:00 p.m.

Weekend & seasonal hours vary.

CHECK IN/OUT TIMES (by local time)

Cabins Mon.-Sun. & holidays

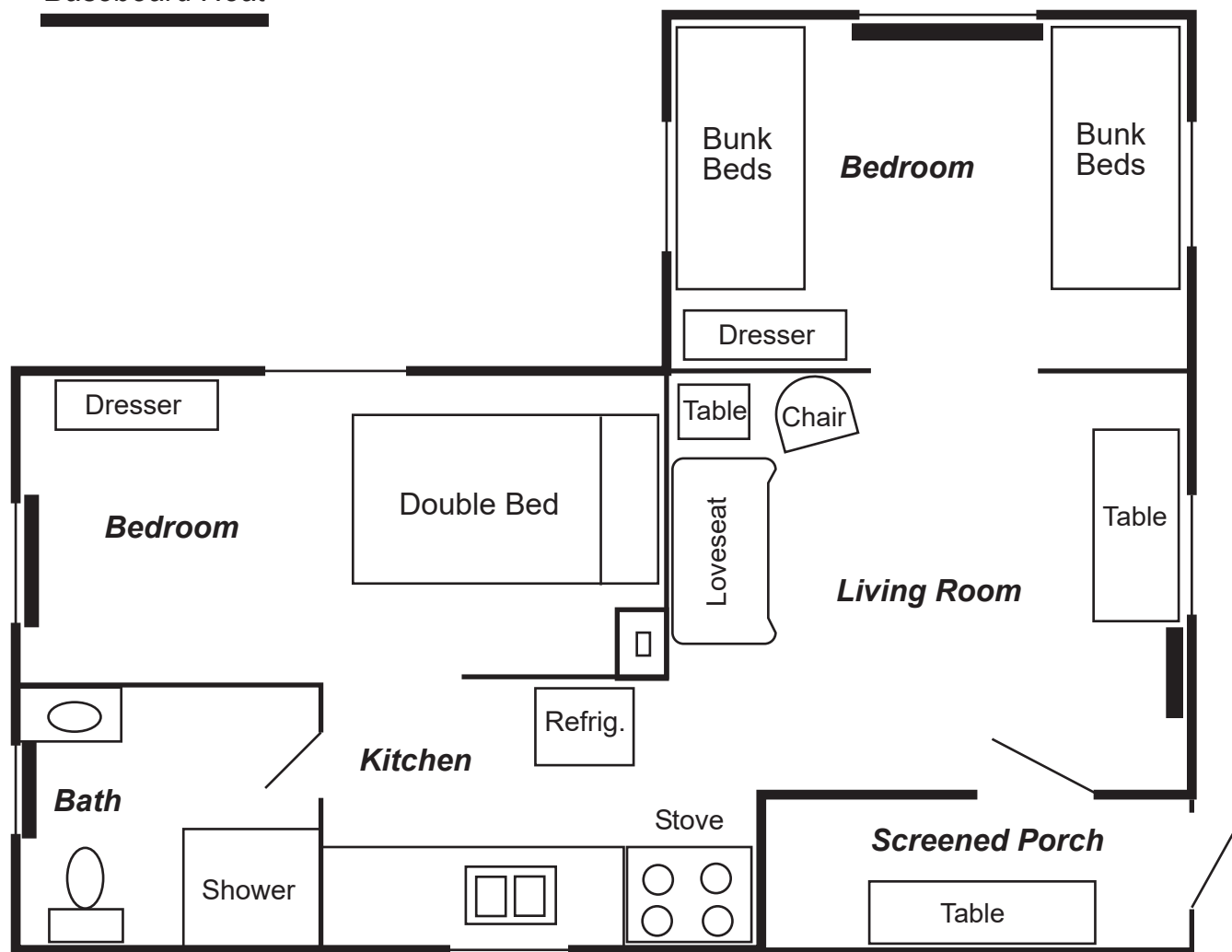
Check-in: 4:00 p.m.

Check-out: 11:00 a.m.

SHAKAMAK STATE PARK

Cabins D

Baseboard Heat



DNR
Indiana Department
of Natural Resources

NEED ASSISTANCE DURING YOUR STAY?

Please contact the park office, gatehouse or other DNR personnel.

Park Office: (812) 665-2158

Dial 911 for all emergencies.

PARK OFFICE HOURS:

Mon.-Fri. 8:30 a.m.-4:00 p.m.

Weekend & seasonal hours vary.

CHECK IN/OUT TIMES (by local time)

Cabins Mon.-Sun. & holidays

Check-in: 4:00 p.m.

Check-out: 11:00 a.m.