

Lake Info: 774 acres, 52 feet max depth
Location: North Webster, IN; Kosciusko County
Access: Public access located on Backwater Lake (connected to main lake via culvert), Pay access at Socks Marina
Fishing Regulations: 44-inch Minimum size on Muskie
Outboard Motor Restrictions: None
Amenities: Seasonal Restroom, Fishing Pier

Recent Stockings: Annually 3,000 Muskellunge
Best Fishing: Muskie, Bluegill, Largemouth Bass, Yellow Perch

DNR Contact Information:
Tyler Delauder, Assistant Fisheries Biologist D3
1353 Governors Drive, Columbia City, IN 46725
(260) 244-6805; D3fish@dnr.IN.gov

Muskie

- Webster Lake is Indiana's premier Muskie fishery and serves as the broodstock for the states Muskie stocking program.
- Webster has one of the highest adult muskie populations per acre in the state. The goal at Webster Lake is to provide a high-quality and high quantity fishery with high expectations of angler success.
- To improve Muskie stocking success statewide, in 2016 Webster Lake was selected to have fall (8-10") and spring (12-14") fish stocked with promising early results.
- The average size for Muskies caught during the Indiana Muskie Classic is 36.4 inches long.
- Fishing drop offs and deep weed beds in spring and fall have produced good results.



A hefty 48.5" female Muskie collected during annual brood stock collection.

Other Species

Largemouth Bass

- Anglers report catching quality Largemouth Bass. Targeting them in the spring before or immediately after the spawn can lead to hooking into large fish.

Yellow Perch and Crappie

- Anglers reporting success fishing the shallow areas in the spring time before water temps begin to rise.
- Black Crappie up to 13.5 inches long were collected in 2016 survey.
- Yellow Perch >10.0 inches long are often observed during spring Muskie broodstock collection.

About the Area

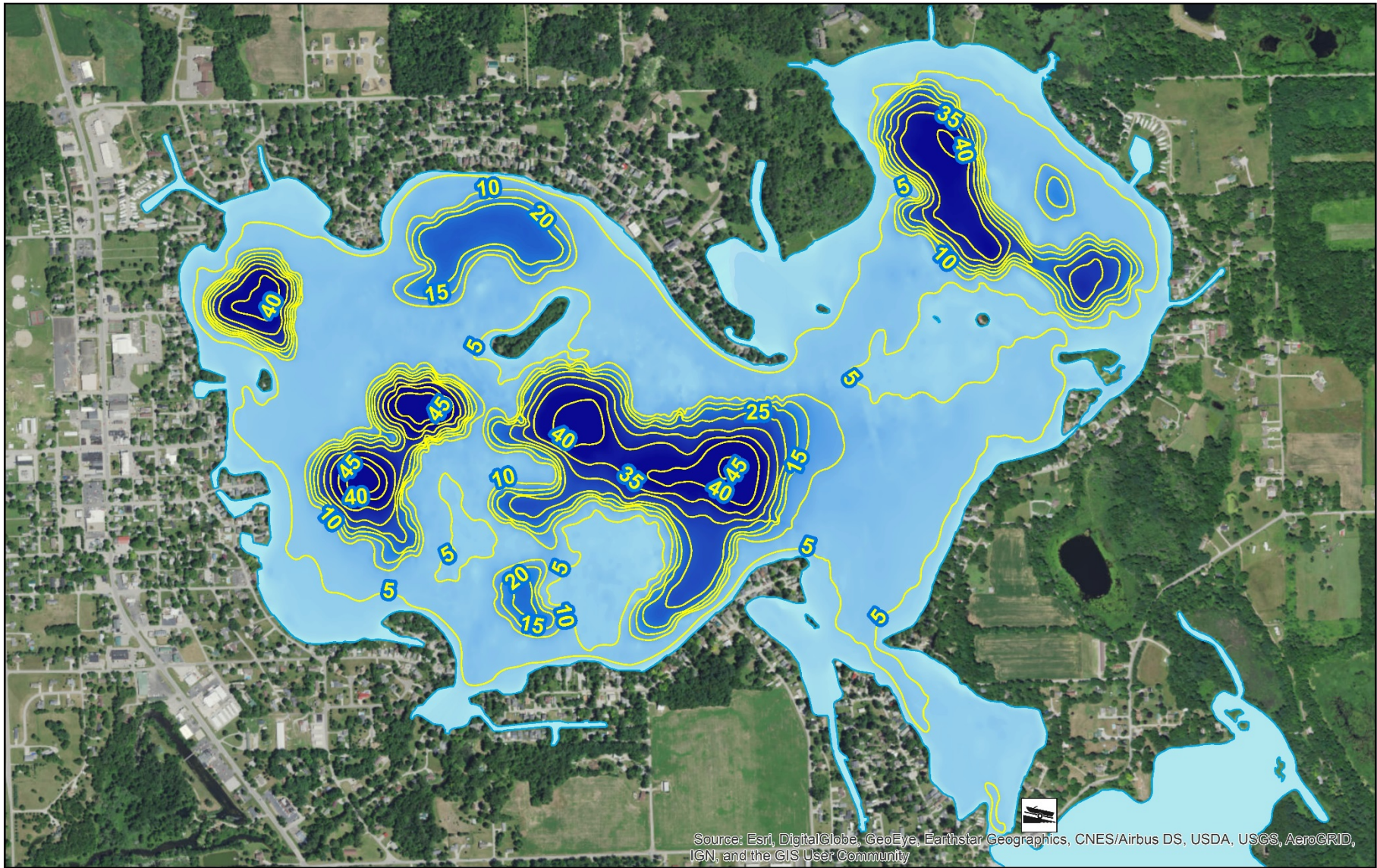
- Kosciusko County provides a wide variety of fishing opportunities in the area.
- Between the Barbee Chain, Tippecanoe Chain, and Webster Lakes there are more than 2,700 acres of Muskie water to fish.
- Nearby Lake Wawasee (Indiana's largest Natural Lake) provides quality Bass, Panfish, and Northern Pike fishing opportunities.
- Nearby Winona Lake is a great spot to fish for Walleye and Northern Pike.
- Lodging
 - Cabins on Webster Lake
 -
 - Warsaw, IN



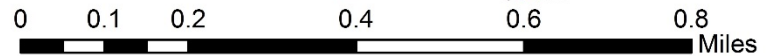
Your purchase of fishing equipment and motor boat fuel supports boating access and Sport Fish Restoration.

Indiana Fishing Regulation Guide:

<http://www.in.gov/dnr/fishwild/2347.htm>



Webster Lake
Kosciusko County
774 acres
7/12/2017
5 ft contours



2017 Indiana Department of Natural Resources (IDNR)
(Permission is granted to reprint with credit given to IDNR)

